



Textile

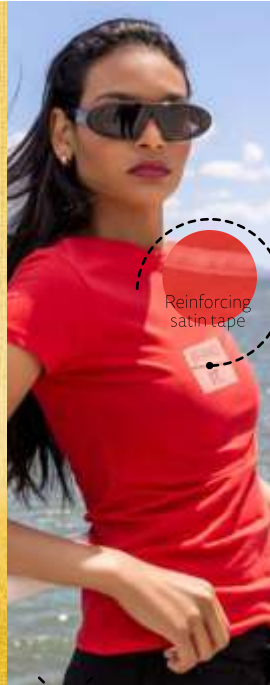
TH Clothes® - The brand

TH Clothes® was born on 2006 with the purpose of filling the necessity to provide certificate quality products at a fair price. The clothing brand has as its main premise, the satisfaction of it's clients, without neglecting the social responsibility and the commitment with quality. All are products comply the criteria required by the STANDARD 100 by OEKO-TEX®, which as certification OEKO-TEX®, ensuring that the clients and users have a high and effective product security.

EVENTS & PROMOTIONS
SPORTS & LOUNGE
SCHOOLS & KIDS
CORPORATIVE UNIFORMS
HIGH VISIBILITY
WORK CLOTHES
FASHION & BRANDS



Textile manufacture responsible and with quality assurance. Tested for use of nocive substances according to Oeko-Tex® Standard 100.



Reinforcing satin tape



THC Sofia



Women's fitted T-shirt in 100% cotton jersey knit (150 g/m²) with carded cotton yarn (colour 183: 90% cotton/10% viscose; colour 196: 98% cotton/2% viscose). Contains a thin double collar in jersey reinforced by a satin bias tape. Cut and sewn garment with double stitched hem on the sleeves and bottom.

♣ Sizes: S, M, L, XL, XXL

♣ TRS - 240 x 200 mm

30105

106

30106



THC Luanda



Tubular t-shirt for men with regular cut in jersey 100% cotton (150 g/m²) with carded cotton yarn (colour 183: 90% cotton/10% viscose). Contains a 1x1 rib collar with jersey reinforcement; ribbon and double seam on sleeves and bottom.

♣ Sizes: XS, S, M, L, XL, XXL

♣ TRS - 280 x 200 mm

30101

106

30102





THC Ankara Women



100% cotton jersey Women's fitted T-shirt (190 g/m²) with carded cotton yarn (colour 183: 90% cotton and 10% viscose). Contains thin jersey collar with satin ribbon reinforcement. Piece cut and sewn with double seam on the sleeves and lower part.

📏 Sizes: S, M, L, XL, XXL

🔪 TRS – 240 x 200 mm

30113



30114



THC Ankara



Tubular t-shirt for men with regular cut in jersey 100% cotton (190 g/m²) with carded cotton yarn (colour 183: 90% cotton/10% viscose). Contains a 1x1 rib collar with jersey reinforcement ribbon and double seam on sleeves and bottom.

📏 Sizes: XS, S, M, L, XL, XXL

🔪 TRS – 280 x 200 mm

30109



30110



THC San Marino



Short-sleeved men's shirt made from 100% combed cotton pique (195 g/m²) (colour: 183: 85% cotton/15% viscose). Stylish and modern cut with thin collar and 1x1 Rib cuffs. Reinforced collar with pique bias, without label. Cut and sewn garment, with regular fit.

📏 Sizes: S, M, L, XL, XXL

🔪 DTG – 300 x 350 mm

30185



30186





th
clothes

THC Athens Women



100% cotton women's jersey fitted t-shirt (150 g/m²) with carded cotton yarn (colours: 194, 195 and 199: 60% cotton/40% polyester). Contains a jersey collar with overlaid "V" neckline, reinforced inside with jersey ribbon. Piece cut and sewn with double seam on the sleeves and lower part.

📏 Sizes: S, M, L, XL, XXL
➤ TRS – 240 x 200 mm

30117

106

30118

195 102 154 104 199 194 103 183



THC Athens



Tubular t-shirt for men with regular cut in jersey 100% cotton (150 g/m²) with carded cotton yarn (colours: 194, 195 and 199: 60% cotton/40% polyester). Contains a jersey collar with reinforced "V" neckline inside with jersey ribbon. Double stitching on sleeves and bottom.

📏 Sizes: S, M, L, XL, XXL
➤ DTG – 300 x 350 mm

30115

106

30116

104 194 134 195 199 103 183



THC Nicosia



Technical short sleeved men's T-shirt in 100% polyester mesh (130 g/m²). Regular fit, with comfortable and breathable fabric. Contains reinforcement tape on the collar in jersey and double stitched hem on the sleeves and bottom.

📏 Sizes: S, M, L, XL, XXL
➤ TRS – 280 x 200 mm

30192

106

30127

179 114 134 132 105 103



THC Nicosia Women



Technical slightly fitted T-shirt with short sleeve for women in 100% polyester jersey knit (130 g/m²). Regular fit, with comfortable and breathable fabric. Reinforced collar with jersey and double stitched hem on the sleeves and bottom.

📏 Sizes: S, M, L, XL, XXL
➤ DTG – 240 x 300 mm

30193

106

30128

105 179 114 134 132 162 103



THC Bucharest Women



Long-sleeved fitted women's jersey shirt 100% cotton (150 g/m²) with carded cotton yarn (colours: 194, 195: 60% cotton/40% polyester; colour 183: 90% cotton/10% viscose). Modern cut with collar with jersey reinforcement band. Cut and sewn piece with double seam on sleeves and bottom.

📏 Sizes: S, M, L, XL, XXL

🔪 DTG – 240 x 300 mm

30125

106

30126

134 114 194 105 195 183 103



THC Bucharest



Long-sleeved men's t-shirt 100% cotton jersey (150 g/m²) with carded cotton yarn (colours: 194, 195: 60% cotton/40% polyester; colour 183: 90% cotton/10% viscose). Rib collar 1x1 and jersey reinforcement ribbon. Tubular T-shirt with regular cut and double seam on the sleeves and bottom.

📏 Sizes: S, M, L, XL, XXL

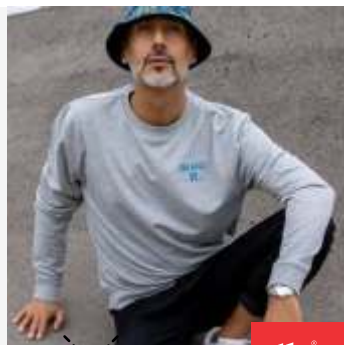
🔪 TRS – 280 x 200 mm

30123

106

30124

134 114 194 105 195 183 103



THC Colombo



50% cotton and 50% polyester italian brushless fleece unisex sweatshirt (240 g/m²). Rib collar, cuffs and waistband and reinforcement ribbon inside the collar.

📏 Sizes: S, M, L, XL, XXL, 3XL

🔪 TRS – 290 x 200 mm

30265

106

30266

103 134 114 105 168 158 169 183



THC Ibiza



100% cotton men's sleeveless jersey (140 g/m²) with carded cotton yarn (colours: 194, 195 and 199: 60% cotton/40% polyester and colour 183: 90% cotton/10% viscose). Wide armholes and round collar, with bias tape on the armholes and neckline. Piece cut and sewn with double seam at the bottom.

📏 Sizes: XS, S, M, L, XL, XXL

🔪 TRS – 280 x 200 mm

30121

106

30122

103 183 178 195 199



THC Tirana



Sleeveless T-shirt for women in 100% cotton jersey knit (160 g/m²) with carded cotton yarn. Round collar and "T" shaped back. Cut and sewn garment with double stitched hem and bias on the armholes and neckline.

📏 Sizes: S, M, L, XL, XXL

🔪 TRS – 240 x 200 mm

30119

106

30120

169 154 102 105 178 148 103



THC Dhaka



100% carded cotton pique men's short sleeve polo (195 g/m²) (colour 183: 85% cotton/15% viscose). With elegant collar and rib sleeves, with a piqué reinforcement collar. Reinforced placket with 2 matching colour buttons (extra button inserted in the inner seam). Modern cut with single welted pocket on the chest. Cut and sewn piece with small side openings at the bottom of the polo.

📏 Sizes: S, M, L, XL, XXL
 📏 TRS – 100 x 60 mm



THC Adam



100% cotton carded piqué mesh short-sleeved men's polo (195 g/m²) (colour 183: 85% cotton/15% viscose). With regular fit, this polo has rib collar and sleeves. The collar is reinforced with piqué ribbon. On the front, next to the collar, there are three matching colour buttons (extra button inserted in the inner seam). Piece cut and sewn with small side openings at the bottom of the polo.

📏 Sizes: S, M, L, XL, XXL
 📏 TRS – 280 x 200 mm



THC Eve



100% carded cotton pique women's short sleeve polo (195 g/m²) (colour 183: 85% cotton/15% viscose). Contains rib collar and sleeves. The collar is reinforced with piqué ribbon. On the front, next to the collar, there are four matching colour buttons (extra button inserted in the inner seam). Piece cut and sewn.

📏 Sizes: S, M, L, XL, XXL
 📏 DTG – 240 x 200 mm

30209



30208



30130



30131



30134



30135





THC Berlin



Short sleeve polo shirt for men in piqué mesh 35% carded cotton and 65% polyester (200 g/m²). Colour 183: 85% cotton/15% viscose. Regular cut polo with rib collar and sleeves, the collar being reinforced with piqué knit ribbon. Contains a reinforced collar with 3 matching colour buttons (extra button inserted in the inner seam). Piece cut and sewn.

📏 Sizes: XS, S, M, L, XL, XXL

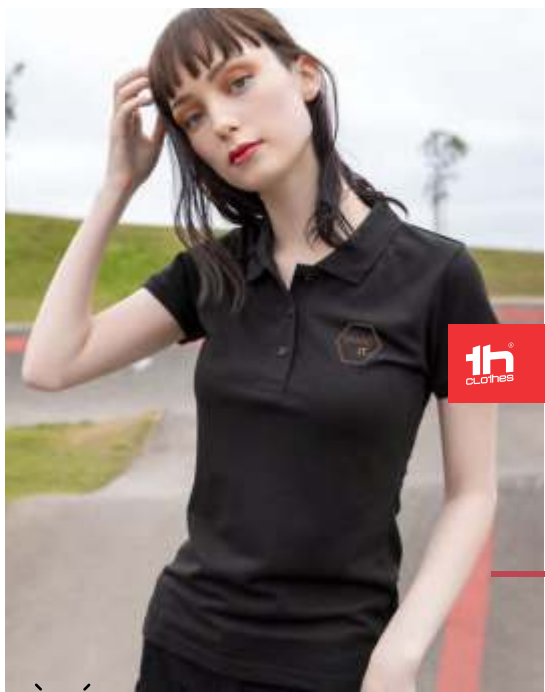
📏 TRS – 280 x 200 mm

30175

106

30176

103 113 183 114 134 115 129



th
clothes

THC Berlin Women



35% carded cotton and 65% polyester (200 g/m²) short-sleeve piqué mesh women polo shirt (200 g/m²) (colour: 183: 85% cotton/15% viscose). Fitted waist polo with rib collar and sleeves, the collar is reinforced with piqué knit ribbon. Contains a reinforced collar with 3 matching coloured buttons (extra button in the inner seam). Piece cut and sewn.

📏 Sizes: S, M, L, XL, XXL

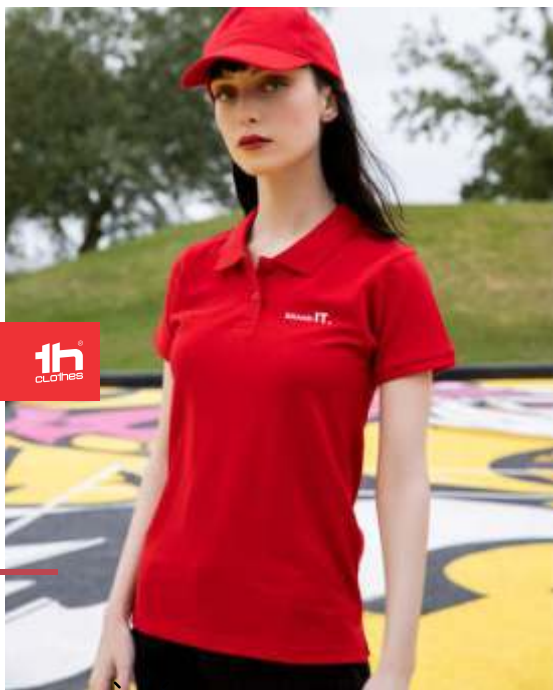
📏 TRS – 280 x 200 mm

30263

106

30264

103 113 183 114 134 115



th
clothes

THC Monaco Women



100% carded cotton (240 g/m²) short-sleeved pique women polo. Regular cut with collar and ribbon sleeves and pique collar reinforcement. Reinforced collar with 2 matching coloured buttons (extra button in the inner seam). Piece cut and sewn with small side openings at the bottom of the polo. The visible label is removable.

📏 Sizes: S, M, L, XL, XXL

🔪 TRS – 280 x 200 mm

30261

106

30262



THC Monaco



Short-sleeved men's polo made 100% carded cotton (240 g/m²) (colour: 183: 85% cotton/15% viscose). Regular cut with collar and ribbon sleeves and pique collar reinforcement. Reinforced collar with 3 matching colour buttons (extra button inserted in the inner seam). Piece cut and sewn with small side openings at the bottom of the polo. The visible label is removable.

📏 Sizes: S, M, L, XL, XXL

🔪 TXP – 290 x 200 mm

30187

106

30188





THC Rome Women



Short-sleeved bicolour polo for women in 100% carded cotton piqué (210 g/m²) (colour: 183: 85% cotton/15% viscose). Two-colour contrast on the collar, sleeve and placket. Contains collar and cuffs in Rib. Reinforced placket with 3 contrasting colour buttons (extra button inserted in the inner side seam). Fitted waist and small side slits on the bottom of the polo.

📏 Sizes: S, M, L, XL, XXL

🔪 DTG – 240 x 200 mm

30138

106

30139

103 113 105 183 114 134



THC Rome



Short-sleeved bicolour polo for men in piqué 100% cotton carded (210 g/m²) (colour: 183: 85% cotton/15% viscose). Two-colour contrast on the collar, sleeve and placket. Contains collar and cuffs in Rib. Reinforced placket with 3 contrasting colour buttons (extra button inserted in the inner side seam). Fitted waist and small side slits on the bottom of the polo.

📏 Sizes: S, M, L, XL, XXL

🔪 TRS – 290 x 200 mm

30136

106

30137

105 183 134 104 114 119
109 108 113



THC Bern Women



Long-sleeved polo for women in piqué 100% carded cotton (210 g/m²) (colour 183: 85% cotton/15% viscose). Rib collar reinforced with piqué knit ribbon. Contains reinforced placket with 4 matching colour buttons (extra button inserted in the inner seam). Piece cut and sewn with double seam sleeves. The visible label is removable.

📏 Sizes: S, M, L, XL, XXL

🔪 DTG – 240 x 200 mm

30144

106

30145

103 183 134 114 102 105
115



th
clothes

THC Bern



Long-sleeved polo for men in piqué 100% carded cotton (210 g/m²) (colour 183: 85% cotton/15% viscose). Regular cut polo with rib collar and cuffs, the collar being reinforced with piqué knit ribbon. Contains a reinforced collar with 3 matching colour buttons (extra button inserted in the inner seam). Piece cut and sewn with side openings at the bottom. The visible label is removable.

📏 Sizes: S, M, L, XL, XXL

🔪 DTG – 290 x 200 mm

30140

106

30141

115 105 103 183 111
128 119 114 134



THC London Women



Short-sleeved oxford shirt for women in 70% cotton and 30% polyester (130 g/m²). Fitted shirt with 2 darts on the back and front and double seam on the sleeve hem. Contains 7 pearl coloured buttons.

📏 Sizes: S, M, L, XL, XXL
 📏 TRS – 80 x 40 mm

30201



30158



THC Tokyo Women



Long-sleeved oxford shirt for women in 70% cotton and 30% polyester (130 g/m²). Contains adjustable cuffs with 2 buttons and sleeve with 1 pleat. Fitted shirt with 2 darts on the front and back, and placket with 7 pearl coloured buttons.

📏 Sizes: S, M, L, XL, XXL
 📏 TXP – 80 x 40 mm

30197



30154



THC Paris Women



Long-sleeved shirt for women in 68% cotton, 28% polyamide and 4% elastane (115 g/m²). Long sleeve with 1 pleat and adjustable cuffs with 1 button. Fitted waist with 2 darts on the back and placket with 7 matching colour buttons.

📏 Sizes: S, M, L, XL, XXL
 📏 DTG – 80 x 40 mm

30195



30152



THC Batalha Women



Popelin long-sleeved women's shirt with a pleat 35% cotton and 65% polyester (115 g/m). Contains invisible button for collar firmness, 7 matching colour buttons and adjustable cuffs with 1 button. Shirt with two back darts.

📏 Sizes: S, M, L, XL, XXL
 📏 TXP – 80 x 40 mm

30214



30213





THC London



Short-sleeved oxford shirt for men 70% cotton and 30% polyester (130 g/m²). Contains double seam on sleeve cuff and chest pocket on left side. Collar with 2 buttons and placket with 7 pearl coloured buttons.

📏 Sizes: S, M, L, XL, XXL

➤ DTG – 80 x 40 mm

30200

106

30157

103 124



THC Tokyo



Long sleeve oxford shirt for men in 70% cotton and 30% polyester (130 g/m²). Contains adjustable cuffs with 2 buttons, sleeve with 2 pleats and chest pocket on the left side. Collar with 2 buttons and placket with 7 pearl coloured buttons (except black).

📏 Sizes: S, M, L, XL, XXL

➤ TRS – 80 x 40 mm

30196

106

30153

103 124 113 115



THC Paris



Long-sleeved men's shirt in 68% cotton, 28% polyamide and 4% elastane (115 g/m²). Long sleeve with 1 pleat and adjustable cuffs with 2 buttons. Placket with 7 buttons in matching colour.

📏 Sizes: S, M, L, XL, XXL

➤ DTG – 80 x 40 mm

30194

106

30151

103 124 113 115



THC Batalha



Popelin long-sleeved men's shirt with a pleat 35% cotton and 65% polyester (115 g/m). Contains invisible button for collar firmness, 7 matching colour buttons and adjustable cuffs with 1 button. Shirt with two back darts.

📏 Sizes: S, M, L, XL, XXL

➤ TRS – 80 x 40 mm

30212

106

30211

103 124 134



THC Delta



Sweatshirt (unisex) in 50% cotton and 50% polyester (300 g/m²) with carded interior. Contains double and rib seam on collar, cuffs and waistband. The collar includes reinforcement ribbon.

📏 Sizes: S, M, L, XL, XXL

📏 TRS – 280 x 200 mm

30202 (106)

30159 (115) (105) (128) (168) (109) (149) (129)

(169) (114) (134) (103) (113) (183)



THC Milan Women



Pullover with "V" neckline for women 70% cotton and 30% polyamide (220 g/m²). Contains collar, cuffs and lower part in Rib. Sleeves inserted with fully-fashion.

📏 Sizes: S, M, L, XL, XXL

📏 DTG – 280 x 200 mm

30150

(103) (193) (115) (134)



THC Milan



Pullover with "V" neckline for men 70% cotton and 30% polyamide (220 g/m²). Contains collar, cuffs and lower part in rib. Sleeves inserted with fully-fashion.

📏 Sizes: S, M, L, XL, XXL

📏 DTG – 280 x 200 mm

30149

(103) (193) (115) (134)

THC Vilnius



Sweatshirt (unisex) with hood in 50% cotton and 50% polyester (320 g/m²), carded on the inside. With high collar and taffeta hood, stored inside the collar, that can be accessed through a zip. Flattering seam in the abdominal area and 1x1 Rib in the cuffs and waistband. Contains 2 side pockets with matching colour zips.

📏 Sizes: XS, S, M, L, XL, XXL

🔪 TRS – 280 x 200 mm

30253



th
clothes

THC Budapest



Sweatshirt (unisex) 50% cotton and 50% polyester (320 g/m²) with carded interior. Contains ribbon cuffs and waistband and 1/4 coloured zip.

📏 Sizes: S, M, L, XL, XXL

🔪 TRS – 90 x 60 mm

30163



THC Vienna



Fleece (unisex) in 100% polyester (260 g/m²) with 1/4 zip closure. Contains elastic band on the sleeves and zip guard for extra comfort.

📏 Sizes: S, M, L, XL, XXL

🔪 EDB – 100 x 60 mm

30166





THC Gama Women



100% polyester (300 g/m²) anti-pilling high-density women's fitted fleece jacket. Coloured zipper and inner lining for greater comfort. Contains zippered side pockets and flap, elastic band on sleeves, elastic drawstring at the bottom and reinforcement ribbon on the inside of the collar.

📏 Sizes: S, M, L, XL, XXL
🔪 EDB - 100 x 60 mm

30259



THC Gama



100% polyester (300 g/m²) anti-pilling high-density men's fleece jacket. Coloured zipper and inner lining for greater comfort. Contains zippered side pockets and flap, elastic band on the sleeves, elastic drawstring at the bottom and reinforcement ribbon on the inside of the collar.

📏 Sizes: S, M, L, XL, XXL, 3XL
🔪 EDB - 100 x 60 mm

30258



THC Helsinki Women



100% polyester women's fitted fleece jacket (260 g/m²) with coloured zip and zip guard for greater comfort. Contains side pockets and elastic band on sleeves.

📏 Sizes: S, M, L, XL, XXL
🔪 EDB - 100 x 60 mm

30165



THC Helsinki



100% polyester men's fleece jacket (260 g/m²) with coloured zip and zip guard for greater comfort. Contains side pockets and elastic cuffs.

📏 Sizes: S, M, L, XL, XXL
🔪 EDB - 100 x 60 mm

30164





THC Amsterdam



50% cotton and 50% polyester men's sweatshirt (320 g/m²) with carded interior. The hood is lined and contains colour cord closure. The front area has two marsupial pockets with plastic cover closure. Piece with cuffs and ribbon waistband.

📏 Sizes: S, M, L, XL, XXL

🔪 TRS – 100 x 60 mm

30256

106

30161

194 134 105 195 183 103



THC Amsterdam Women



50% cotton and 50% polyester women's sweatshirt (320 g/m²) with carded interior. The hood is lined and contains colour cord closure. The front area has two marsupial pockets with plastic cover closure. Piece with cuffs and ribbon waistband.

📏 Sizes: S, M, L, XL, XXL

🔪 TRS – 100 x 60 mm

30257

106

30162

194 134 105 195 183 103



THC Moscow



Sweatshirt (unisex) 50% cotton and 50% polyester (320 g/m²) with carded interior. Contains rib 1x1 cuffs and waistband, marsupial pocket and hood with contrasting colour strings.

📏 Sizes: S, M, L, XL, XXL

🔪 TRS – 280 x 200 mm

30189

130 114 168 149 160 116



THC Phoenix



Hooded sweatshirt (unisex) in 50% cotton and 50% polyester (320 g/m²) with carded interior. The hood includes eyelets and fastening cord in matching colour. Sweatshirt with marsupial pocket and 1x1 Rib on the cuffs and waistband.

📏 Sizes: XS, S, M, L, XL, XXL

🔪 TRS – 290 x 200 mm

30203

106

30160

118 128 158 148 153 169
109 149 164 114 134 132
152 105 115 168 183 196
103



THC Liubiana

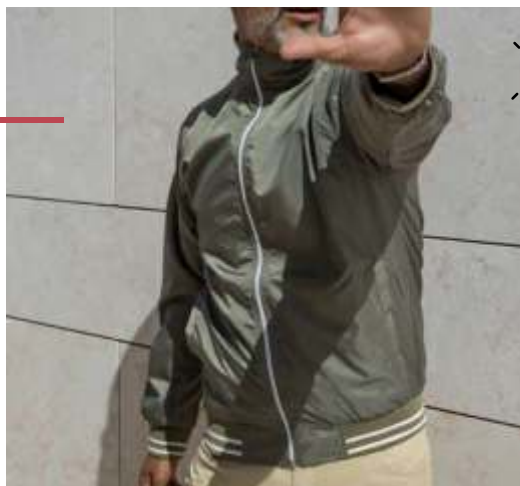


Padded parka (unisex) 100% polyester (exterior: 240 g/m² 100% polyester pongee 240 and waterproof PVC coating; interior: 65 g/m² 100% polyester taffeta; filling: 100% polyester 80 g/m²). Collar lined with black polar mesh (fastened with velcro strip). Foldable collar hood, adjustable with black stoppers. Opening with flap, coloured zip, velcro and snap buttons in black. Contains 2 outer pockets with flap and 2 inner pockets (1 for mobile phone) with velcro closure. Inner 2x2 ribbed mesh cuffs and adjustable outer cuffs with velcro straps. Thermo-sealed seams. Zippered lower back access for easy customisation.

📏 Sizes: XS, S, M, L, XL, XXL

🔪 EDB – 90 x 60 mm

30183



THC Oporto

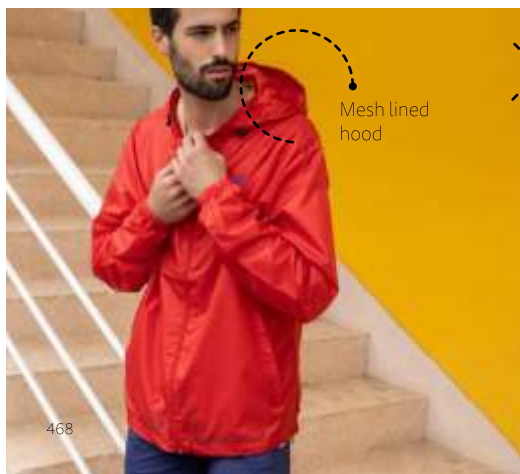


Men's sports jacket in 100% polyester (60 g/m²). With its modern cut, this sports jacket contains 2 front pockets and bicolour details. Zipped access at the back for easy customisation.

📏 Sizes: S, M, L, XL, XXL

🔪 TXP – 290 x 200 mm

30215



THC Dublin



Taffeta windbreaker (unisex) 100% polyester (65 g/m²). Contains a hood with stoppers and net lining. Elastic with stoppers at the bottom and side pockets with plastic closure.

📏 Sizes: XS, S, M, L, XL, XXL

🔪 TXP – 80 x 40 mm

30190





THC Brussels



Long padded parka (unisex) in 100% polyester (exterior: 75 g/m² 300T polyester pongee coating; interior: 100% polyester 50 g/m²; filling: 335g/m²). With lined and padded hood and elastic cuffs. Warm and sturdy parka with decorative topstitching, with interior and front pockets with waterproof zippers.

📏 Sizes: S, M, L, XL, XXL



30254

134 103



THC Skopje



Hooded jacket for men in 300T taffeta (95% polyester and 5% elastane) (280 g/m²). Modern cut with flattering seam on the chest. Contains hood with stoppers and inner pockets. Easy customisation area above the chest.

📏 Sizes: S, M, L, XL, XXL

✂️ TRS – 280 x 200 mm

30246

134 114 105 103



THC Eanes



96% polyester and 4% elastane (280 g/m²) softshell jacket with two layers and water resistant coating. Fleece lined jacket with 2 front pockets and diagonal chest pocket, both zippers with rubber pullers. Adjustable cuffs with velcro strap and drawstring at the bottom.

📏 Sizes: XS, S, M, L, XL, XXL



THC Zagreb Women



Softshell vest for women in 96% polyester and 4% elastane (280 g/m²), with two layers, removable hood and water resistant coating. Lined jacket with 2 front pockets and diagonal chest pocket, all with zips. Adjustable cuffs with velcro strap. Removable hood with drawstring and Velcro strap to attach to the collar. Rounded hem on the back.

📏 Sizes: S, M, L, XL, XXL

➤ TRS – 100 x 60 mm



THC Zagreb



Softshell men's jacket in 96% polyester and 4% elastane (280 g/m²), with two layers, removable hood and water resistant coating. Fleece lined jacket with 2 front pockets and diagonal chest pocket, all with zips. Adjustable cuffs with Velcro strap. Removable hood with drawstring and Velcro strap to attach to the collar. Rounded hem on the back.

📏 Sizes: S, M, L, XL, XXL

➤ TRS – 100 x 60 mm

30260



30181



30180





THC Stockholm



Men's padded work vest in 100% oxford polyester with an acrylic coating (170 g/m²), lined in 100% taffeta polyester (65 g/m²). Fleece lined collar and elastic sides for better fit. Contains 6 pockets: 5 front pockets, including 2 with inner zip plus 1 for mobile phone, and 1 inside pocket. Zipped access at the back for easy customisation.

📏 Sizes: S, M, L, XL, XXL, 3XL

🔪 TRS – 70 x 25 mm

30177



THC Baku



Unisex softshell vest in 96% polyester and 4% elastane with two layers (280 g/m²). Water resistant vest with a back length longer than the front. Contains three pockets, two side pockets with zip, and a double welted chest pocket. Customisation area with easy access.

📏 Sizes: S, M, L, XL, XXL, 3XL

🔪 TRS – 100 x 80 mm

30252





THC Minsk



Workwear smock (unisex) 20% cotton and 80% polyester (190 g/m²). Elegant and modern cut with stylised collar and 2 side pockets. Elastic cuffs and buttoning with snap buttons. Opening at the back for greater freedom of movement.

📏 Sizes: S, M, L, XL, XXL, 3XL

🔪 TRS – 280 x 70 mm

30250

106

30249

103 113 134 111



THC Bratislava



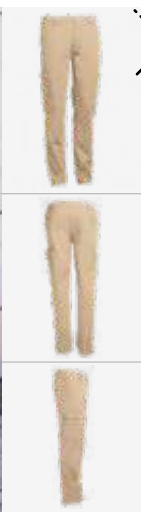
Men's workwear jacket in 98% cotton and 2% elastane (240 g/m²). Modern cut, it contains 2 darts on the back and elastic on the wrist and waist. Buttoning done through snap buttons. Includes 2 back pockets and 1 chest pocket.

📏 Sizes: S, M, L, XL, XXL, 3XL

🔪 TRS – 80 x 80 mm

30248

111 134 113 103



THC Tallinn



Men's work trousers in 98% cotton and 2% elastane (240 g/m²). Contains 6 pockets: 2 side pockets with zip closure, 2 front pockets and 2 back pockets. Waist with elastic on the sides.

📏 Sizes: S, M, L, XL, XXL, 3XL

🔪 TRS – 80 x 80 mm

30247

134 111 113 103

THC Zagreb Work



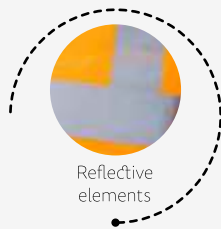
High-visibility softshell jacket (class III) for men in 100% polyester (320 g/m²), with three layers, removable hood and water resistant coating. Softshell jacket with fleece lining and TPU coating. Contains 2 front pockets and a diagonal chest pocket, both with zips. Adjustable cuffs with velcro strap. Removable hood with drawstring and Velcro strap to attach to the collar. Rounded hem on the back.

📏 Sizes: S, M, L, XL, XXL

✂️ TRS – 290 x 200 mm

30182

188 198



Reflective elements



THC Astana



Unisex padded workwear jacket (exterior: 170 g/m² 100% polyester oxford with acrylic coating, filling: 75 g/m² 100% polyester, interior: 65 g/m² 100% polyester taffeta). Convertible to vest, with removable zippered sleeves. Contains a collar lined with polar mesh and three pockets with zipper. Zipped access at the back for easy customisation.

📏 Sizes: S, M, L, XL, XXL, 3XL

✂️ TRS – 280 x 200 mm

30251

103 113 134



THC Warsaw



Men's work trousers in 80% cotton and 20% polyester (260 g/m²) with reflective details on the front and oxford mounts for the pads. Contains a total of 8 pockets, 3 of which have a Velcro fastening including 1 for mobile phone storage. Elastic waist with a plastic clip to hang everyday objects.

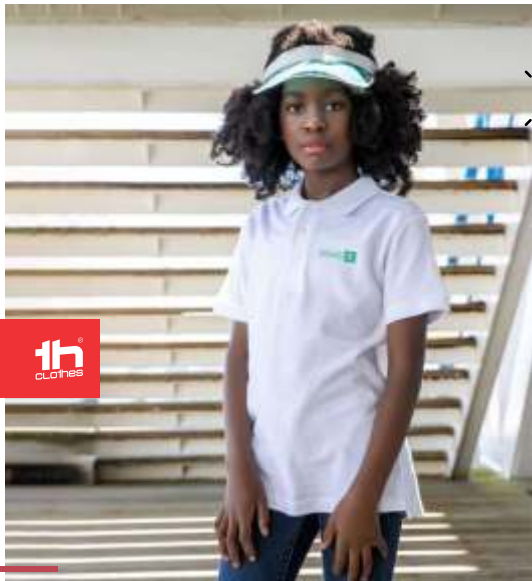
📏 Sizes: XS, S, M, L, XL, XXL

✂️ TRS – 90 x 60 mm

30178

103 134 113





THC Adam Kids



100% cotton piqué knit Kids' (unisex) short-sleeved polo (1,95 g/m²). Contains rib collar and sleeves and the collar is reinforced with piqué ribbon. On the front, next to the collar, there are three matching colour buttons (extra button inserted in the inner seam) and reinforced collar. Piece cut and sewn with small side openings in the lower part of the polo.

📏 Sizes: 2, 4, 6, 8, 10, 12

🔪 TRS – 200 x 200 mm

30172



30173



THC Rodrigo



Microfiber and rubber sole sneakers (unisex) with sporty design. Customisable with patches of different colours, with placement through VELCRO system. It contains decorative stitching in the heel area and 3 perforations in the inner area that allows a better breathability of this comfortable sneaker.

📏 Sizes: 35 to 44

🔪 SCR – 30 x 15 mm

30255





THC Quito



Kids' T-shirt (unisex) in 100% carded cotton jersey (150 g/m²). Contains a 1x1 Rib collar with jersey reinforcement bias tape. Cut and sewn garment with double stitched hem on the sleeves and bottom.

📏 Sizes: 2, 4, 6, 8, 10, 12
 📏 TRS – 200 x 200 mm

30168



30169



THC Ankara Kids



100% cotton jersey Kids' t-shirt (unisex) (190 g/m²) with carded cotton yarn. Contains a 1x1 rib collar with jersey reinforcement ribbon. Piece cut and sewn with double seam on the sleeves and bottom.

📏 Sizes: 2, 4, 6, 8, 10, 12
 📏 TRS – 200 x 200 mm

30170



30171



THC Dublin Kids



Kids' tafetta windbreaker (unisex) 100% polyester (65 g/m²). Contains a hood with stoppers and net lining. Elastic with stoppers at the bottom and side pockets with plastic closure. The visible label is removable.

📏 Sizes: 6, 8, 10, 12, 14
 📏 TXP – 80 x 40 mm

30191



THC Phoenix Kids



Kids' hooded sweatshirt (unisex) in 50% cotton and 50% polyester (320 g/m²) with carded interior. Jersey lined hood, complying with the European Union safety standards. Sweatshirt with marsupial pocket and 1x1 Rib cuffs and waistband.

📏 Sizes: 2, 4, 6, 8, 10, 12
 📏 TRS – 200 x 200 mm

30206



30174



th
clothes